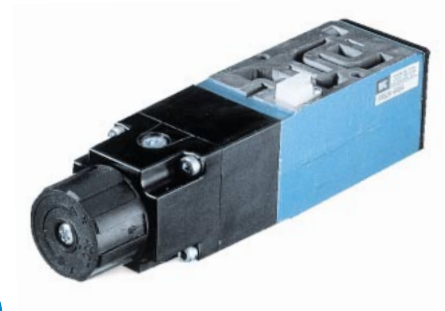


Sandwich pressure regulator with manual adjust.

OPERATIONAL BENEFITS

1. Easy mounting : saves on installation costs in comparison with inline regulators.
2. Allows to have compact, all-included units.
3. Large orifice provides high flow.
4. Various functions available.
5. Simple, reliable and solid design.



HOW TO ORDER

Reset

REGULATORS FOR "PLUG-IN" VALVES

Gauges	Single pressure Regulator A end Same regulated pressure to ports A and B	Dual pressure Regulator A end Regulated pressure to port A *	Dual pressure Regulator B end Regulated pressure to port B *	Dual pressure Dual regulator Two regulated pressures to ports A and B *
No gauge	PR82A-GADA	PR82A-GCDA	PR82A-GBDA	PR82A-GDDA
Gauge parallel to regulator	PR82A-GACA	PR82A-GCCA	PR82A-GBCA	PR82A-GDCA
Gauge perpendicular to regulator	PR82A-GABA	PR82A-GCBA	PR82A-GBBA	PR82A-GDBA

REGULATORS FOR "NON PLUG-IN" AND REMOTE AIR VALVES

Gauges	Single pressure Regulator A end Same regulated pressure to ports A and B	Dual pressure Regulator A end Regulated pressure to port A *	Dual pressure Regulator B end Regulated pressure to port B *	Dual pressure Dual regulator Two regulated pressures to ports A and B *
No gauge	PR82A-HADA	PR82A-HCDA	PR82A-HBDA	PR82A-HDDA
Gauge parallel to regulator	PR82A-HACA	PR82A-HCCA	PR82A-HBCA	PR82A-HDCA
Gauge perpendicular to regulator	PR82A-HABA	PR82A-HCBA	PR82A-HBBA	PR82A-HDBA

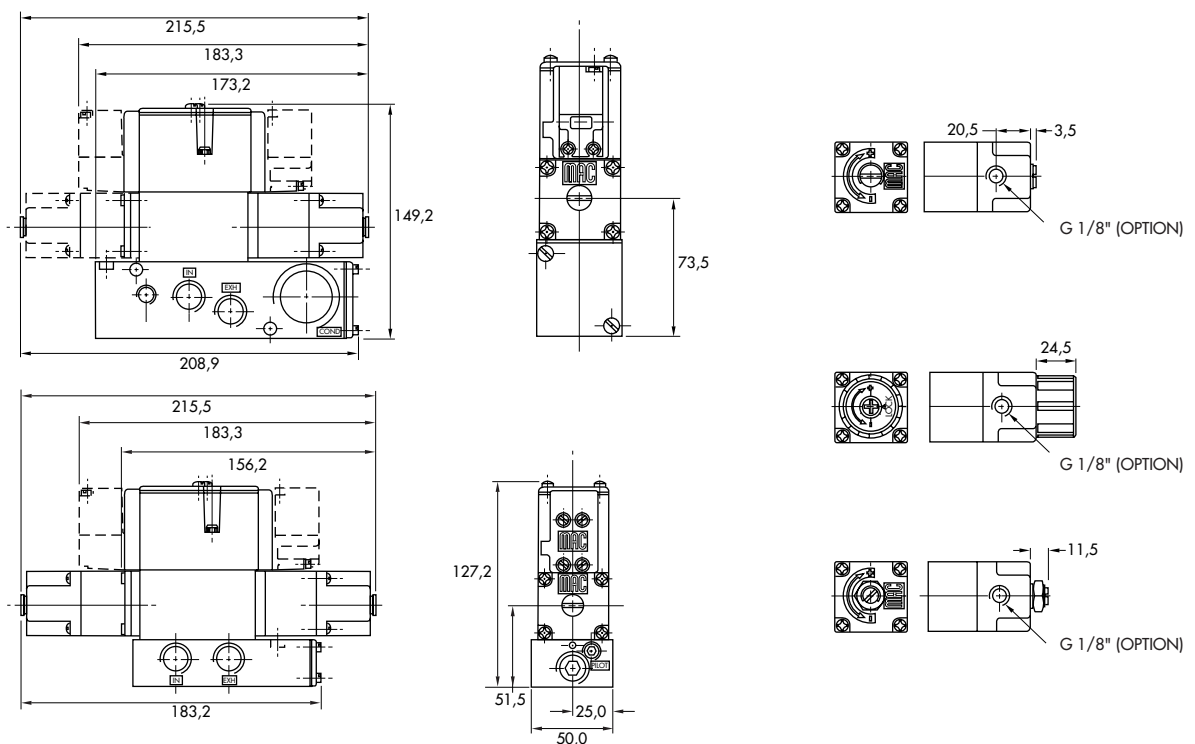
* To be used with dual pressure valves.

**TECHNICAL
DATA**

Fluid :	Compressed air, inert gases
Pressure range :	0 to 10 bar
Regulating range :	0.5 to 8.5 bar
Lubrication :	Not required, if used select a medium aniline point lubricant (between 80°C and 100°C)
Filtration :	40 µ
Temperature range :	-18°C to +50°C
Flow (at 6 bar, ΔP=1bar) :	1080 NI/min (C _v 1.08)

Spare parts : • Pressure regulator : PR82A-J0AA.

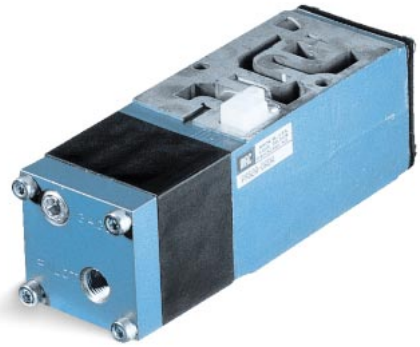
DIMENSIONS



Sandwich pressure regulator with air adjust.

OPERATIONAL BENEFITS

1. Easy mounting : saves on installation costs in comparison with inline regulators.
2. Allows to have compact, all-included units.
3. Large orifice provides high flow.
4. Various functions available.
5. Simple, reliable and solid design.



HOW TO ORDER

Reset

REGULATORS FOR "PLUG-IN" VALVES

Gauges	Single pressure Regulator A end Same regulated pressure to ports A and B	Dual pressure Regulator A end Regulated pressure to port A *	Dual pressure Regulator B end Regulated pressure to port B *	Dual pressure Dual regulator Two regulated pressures to ports A and B *
No gauge	PR82A-DADA	PR82A-DCDA	PR82A-DBDA	PR82A-DDDA
Gauge parallel to regulator	PR82A-DACA	PR82A-DCCA	PR82A-DBCA	PR82A-DCCA
Gauge perpendicular to regulator	PR82A-DABA	PR82A-DCBA	PR82A-DBBA	PR82A-DBBA

REGULATORS FOR "NON PLUG-IN" AND REMOTE AIR VALVES

Gauges	Single pressure Regulator A end Same regulated pressure to ports A and B	Dual pressure Regulator A end Regulated pressure to port A *	Dual pressure Regulator B end Regulated pressure to port B *	Dual pressure Dual regulator Two regulated pressures to ports A and B *
No gauge	PR82A-EADA	PR82A-ECDA	PR82A-EBDA	PR82A-EDDA
Gauge parallel to regulator	PR82A-EACA	PR82A-ECCA	PR82A-EBCA	PR82A-EDCA
Gauge perpendicular to regulator	PR82A-EABA	PR82A-ECBA	PR82A-EBBA	PR82A-EDBA

* To be used with dual pressure valves.

**TECHNICAL
DATA**

Fluid :	Compressed air, inert gases
Pressure range :	0 to 10 bar
Regulating range :	0.5 to 8.5 bar
Lubrication :	Not required, if used select a medium aniline point lubricant (between 80°C and 100°C)
Filtration :	40 µ
Temperature range :	-18°C to +50°C
Flow (at 6 bar, ΔP=1bar) :	1080 NI/min (C _v 1.08)

Spare parts : • Pressure regulator : PR82A-F0AA.

DIMENSIONS

